

4.2 Preparing Multiple Addresses for Plotting on a Map

If you have several addresses to plot, you can simply repeat the directions in section 4.1 as many times as needed. This may be cumbersome if you have many addresses, however, and you are still limited to displaying a dot. A more powerful option is to use a batch geocoder that will process many addresses at once and give you more options once you have your points located.

To use this option, go online to www.gpsvisualizer.com/geocoder. From there, type in the addresses you are interested in geocoding:

GPS Visualizer

Ads by Google [GPS](#) [Virtual Earth](#) [Map Data](#)

GPS Visualizer's Address Locator

Convert multiple addresses to GPS coordinates

Input:

```
9711 Litzsinger Road, 63124
100 South Taylor, 63122
429 South Clay, 63122
```

Type of data: Source: **Start**

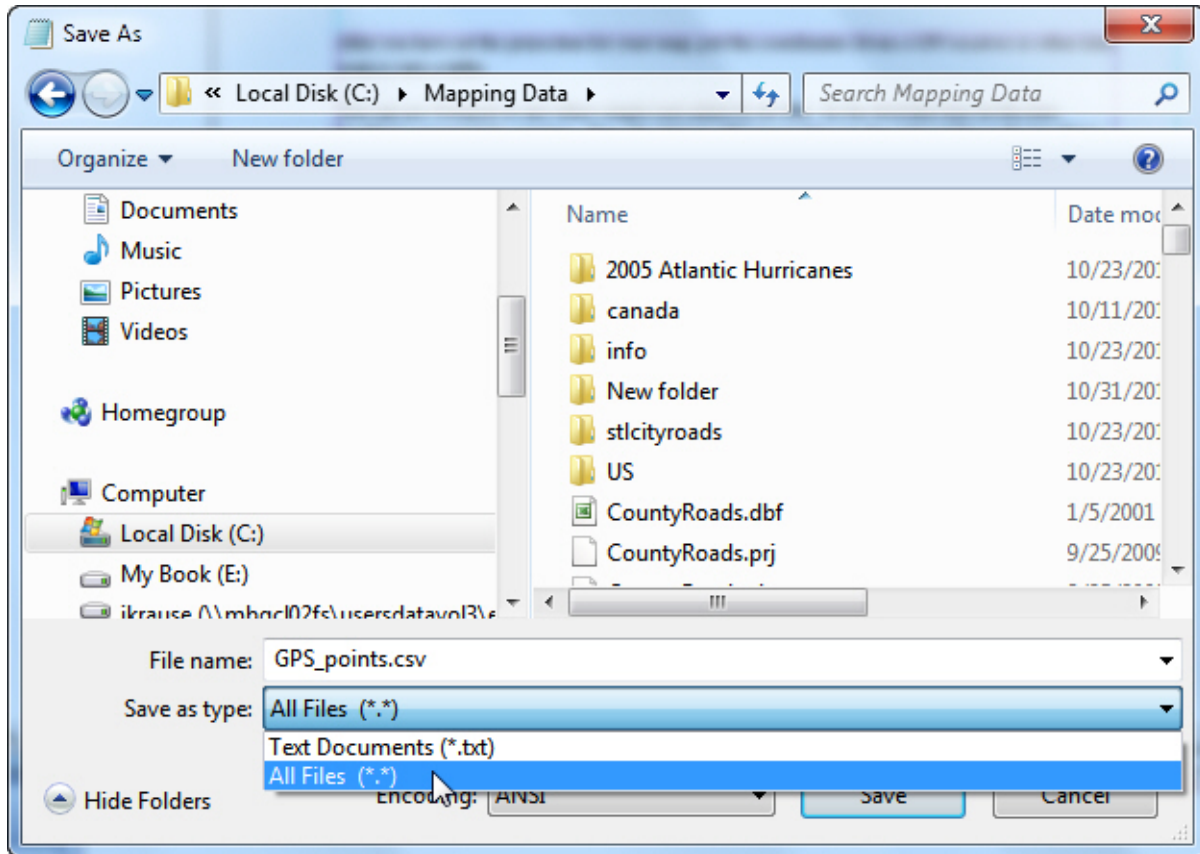
Add a color: Field separator in output:

Click the “Start Geocoding” button and, after a brief wait, your results will appear in a text file below a map of your points.

Results as text: (1 of 1 lines processed)

```
latitude,longitude,name,desc,color
38.62275,-90.376755,"9711 Litzsinger Road, 63124",-
38.581005,-90.403945,"100 South Taylor, 63122",-
38.576762,-90.408946,"429 South Clay, 63122",-
```

Copy and paste the results into Notepad or another text editor, and save the file as a **comma separated value (.csv) file**. Be sure you switch the “Save as type” selector to “All Files.”



These points can then be plotted just as if they were GPS coordinates. (See section 4.3: Plotting GPS Coordinates, page 4.3.2.)

This material is based upon work supported by the National Science Foundation under Grants No. 0639638 and 0833663. Any opinions, findings, and conclusions or recommendations expressed in this material are those of the author(s) and do not necessarily reflect the views of the National Science Foundation.