

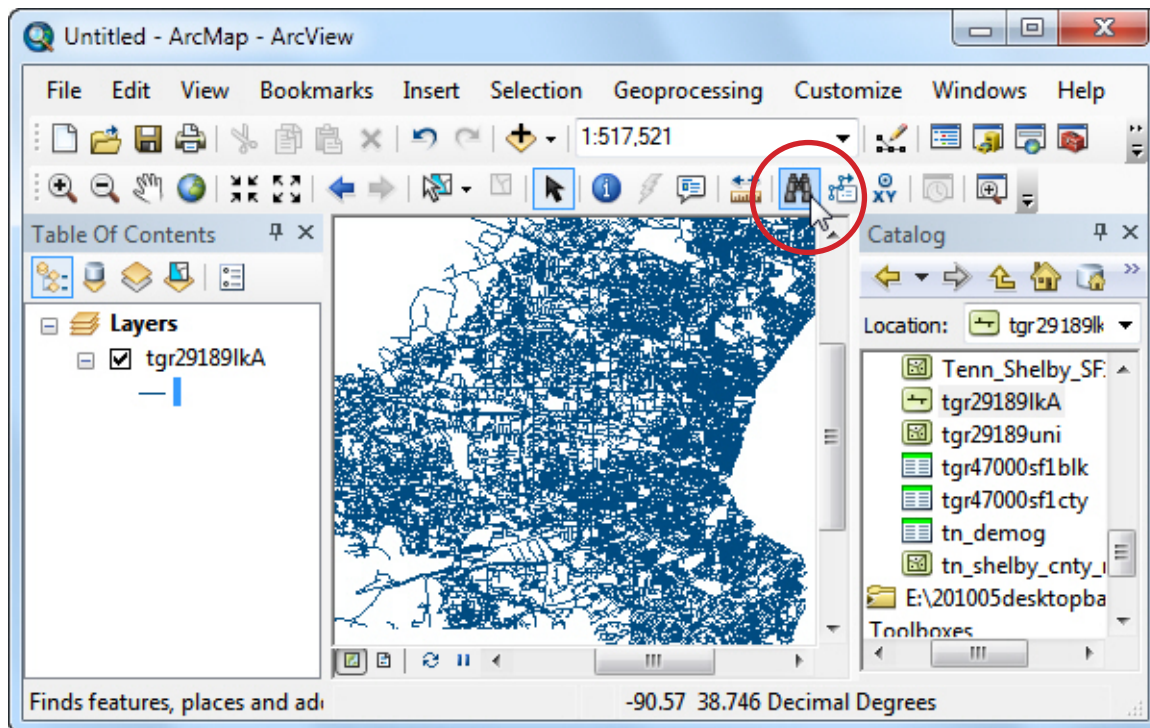
SECTION 4: PLOTTING LOCATIONS

For many projects you will want to plot individual street addresses on a map. There are several techniques that can be used.


4.1 Plotting Single Addresses on a Map

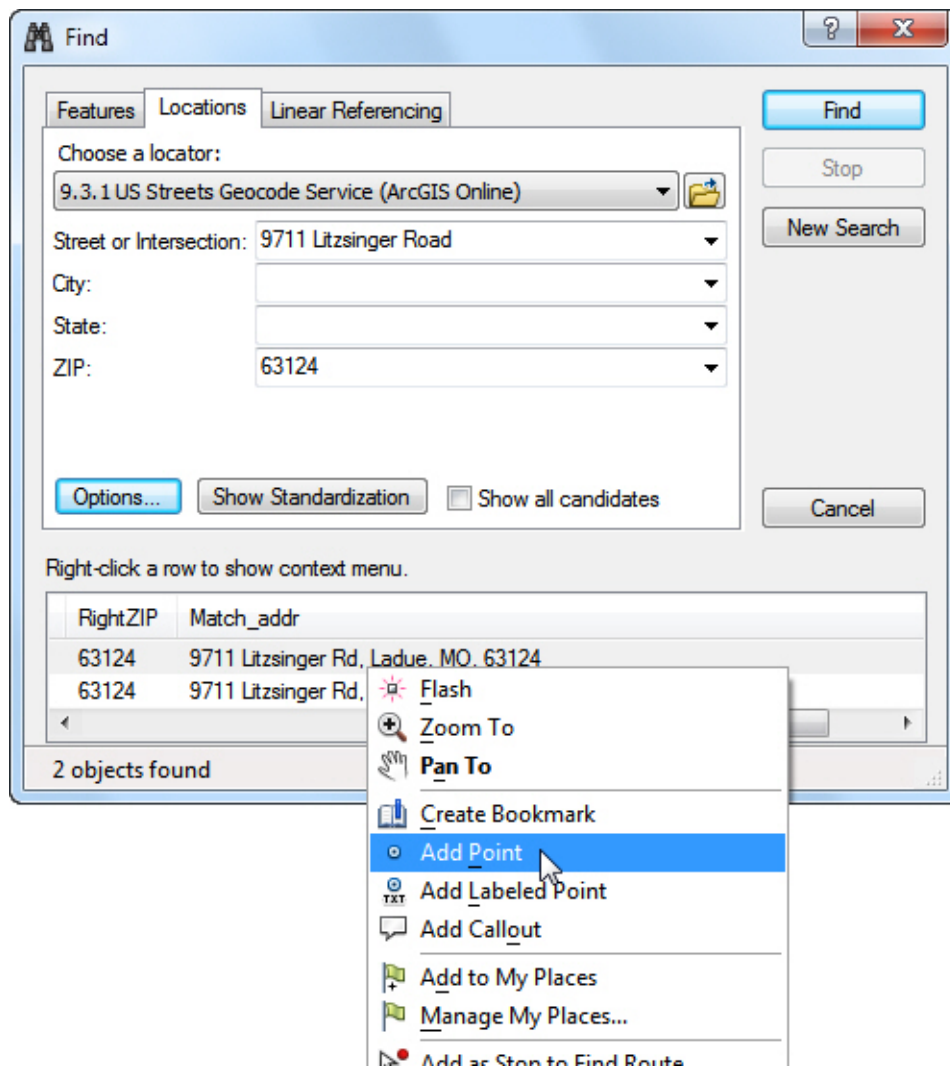
If you have an individual address that you simply want to pinpoint on a map, you can use the “Find” tool to have the ArcGIS software mark your desired location.

- 1) Once you have your street map displayed, choose the “Find” tool ().

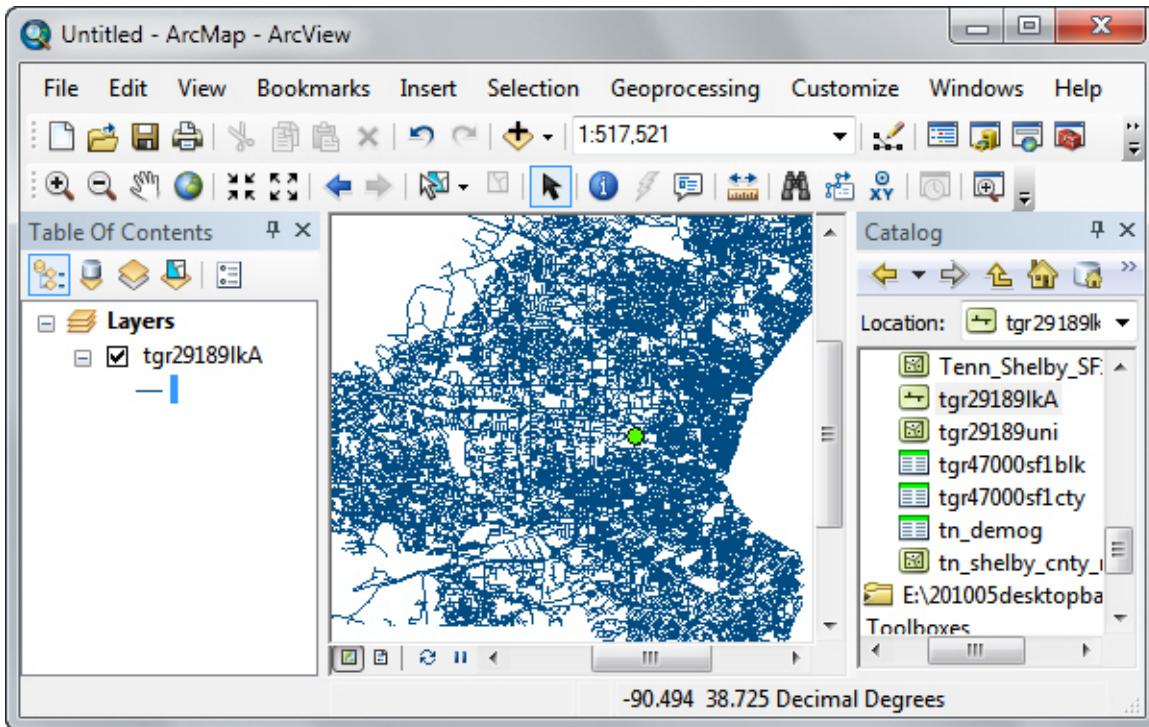


- 2) In the Find dialog box that appears, choose “Locations” from the tabs at the top of the box.
 - a) In the Address Locator pulldown menu, choose the “U.S. Streets Geocode Service” option.
 - b) Enter the address you are interested in. Usually a street and zip code are sufficient.
 - c) Click “Find.”

- 3) Matches will appear at the bottom of the dialog box. Right-click the one you want and choose “Add Point” ().



This will place a small dot at the geocoded location. The dot will stay in the correct location as you zoom in and out or pan around the map.



This technique is easy to use for locating addresses, but it is limited in that you can only identify the location. There are no attributes with the dot that you can use to color code based on an attribute, like you can with most geospatial data.

This material is based upon work supported by the National Science Foundation under Grants No. 0639638 and 0833663. Any opinions, findings, and conclusions or recommendations expressed in this material are those of the author(s) and do not necessarily reflect the views of the National Science Foundation.