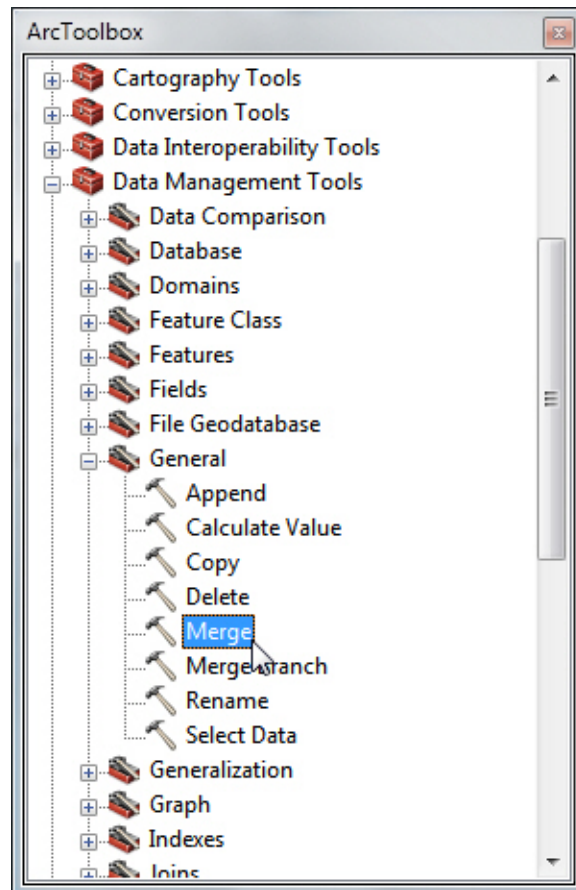


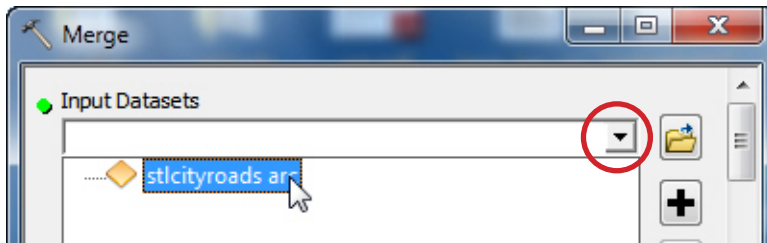
3.3 Merging Data Layers

There will be times when it will be useful to have more than one layer combined into a new layer. In this example, road layers from St. Louis city and county will be combined into one new layer.

- 1) Within ArcMap, open **ArcToolbox** by clicking on the small red toolbox icon ().
- 2) In **ArcToolbox**, double-click “Data Management Tools” and then double-click “General.” This will reveal a number of tools; double-click “Merge.”

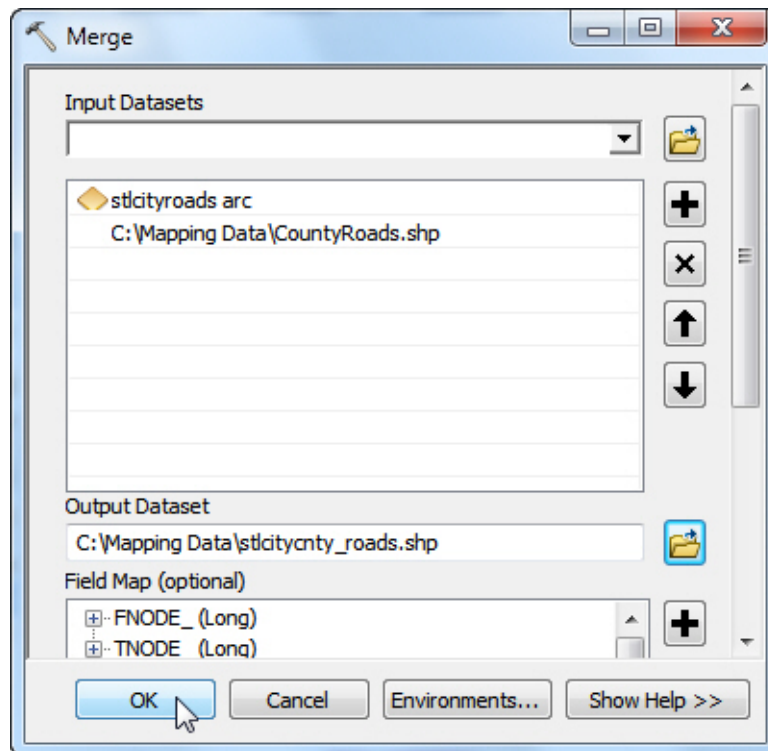


- 3) In the dialog box that appears, choose at least two input layers. To choose layers that have **already** been added to your project, click the small dropdown arrow next to the box. Choose the layers from the list that appears.

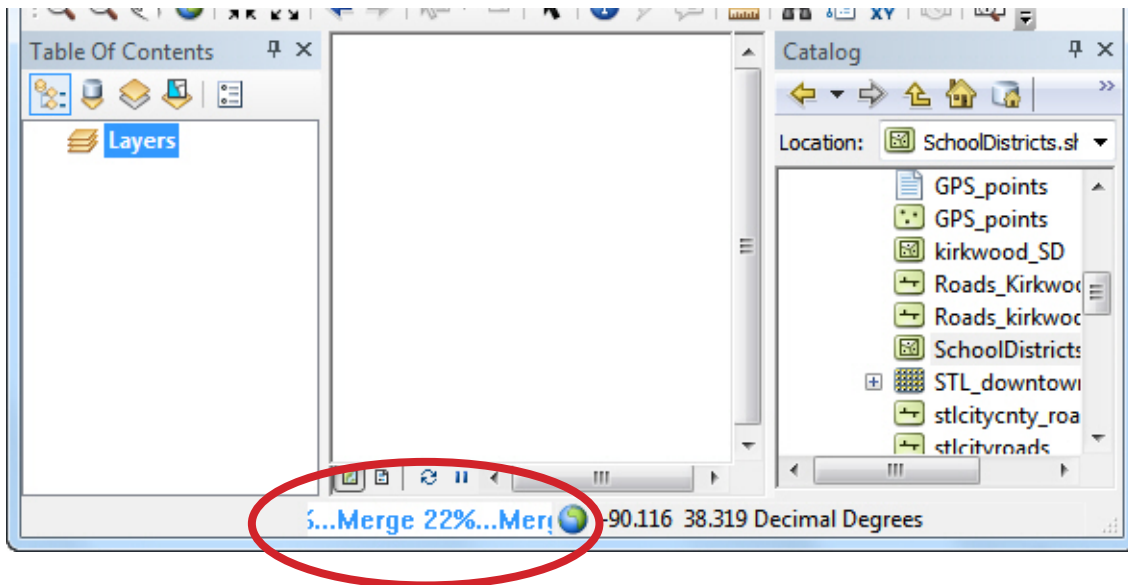


If you need input layers that are not part of your project you can choose them by clicking on the folder icon (📁) and then navigating to the layers you need.

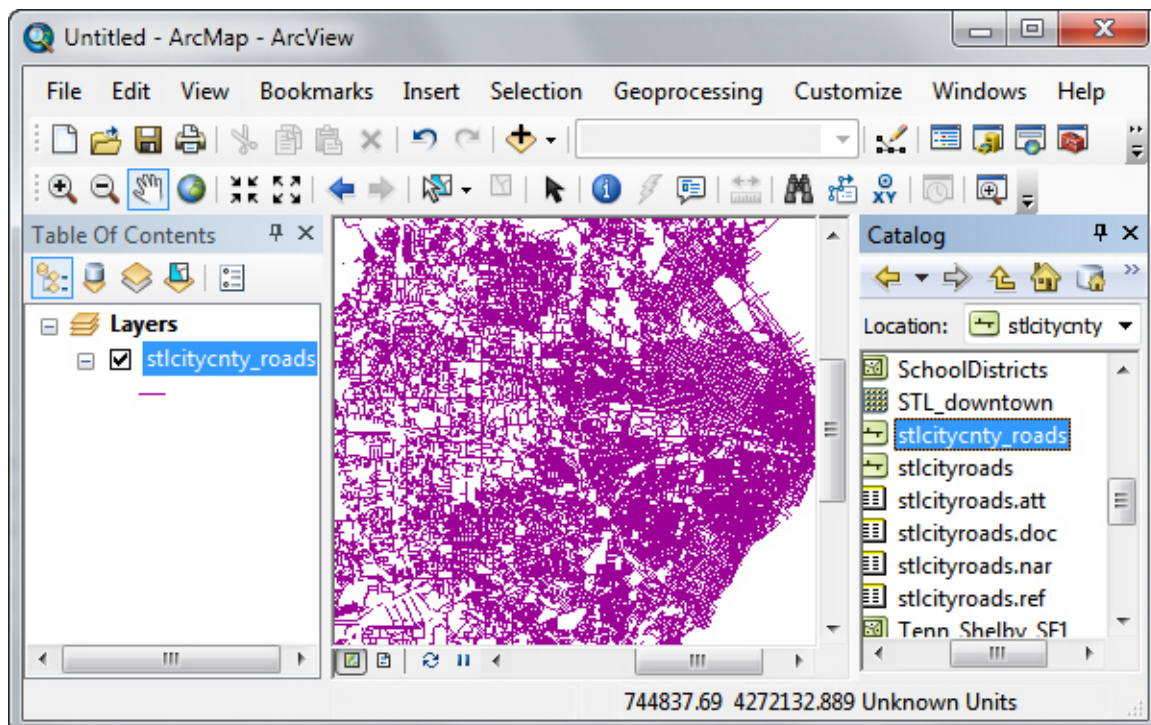
- 4) Give your new layer an appropriate name and location, using .shp as your file type. Click “OK.”



The blue text at the bottom of the ArcMap window will tell you how far along in the merging process you are.



When the merge is finished, you can use your new layer.



This material is based upon work supported by the National Science Foundation under Grants No. 0639638 and 0833663. Any opinions, findings, and conclusions or recommendations expressed in this material are those of the author(s) and do not necessarily reflect the views of the National Science Foundation.